

Trusted Manufacturing Partner

From raw material to market-ready

// SINCE - 2005 //

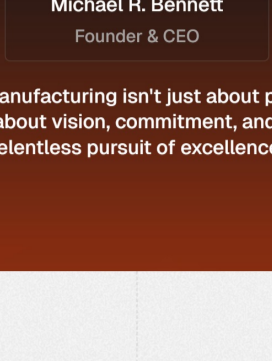
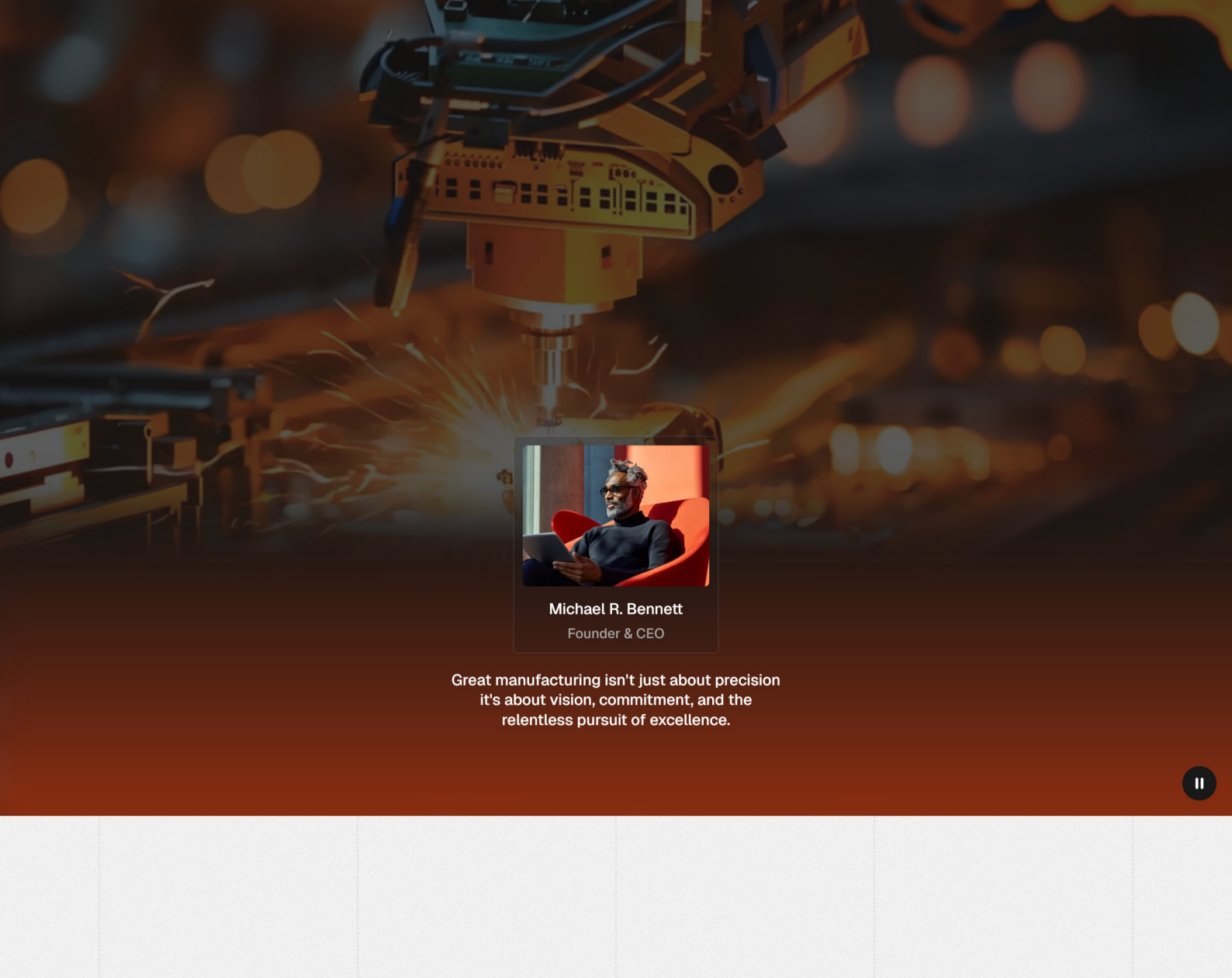
From concept to production, we deliver high-quality, scalable, and cost-effective solutions tailored to your business needs.

[Explore Our Capabilities](#)

Based in: Los Angeles, USA

SCROLL DOWN

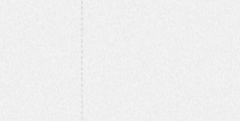
21.0278° N, 105.8342° E



Michael R. Bennett
Founder & CEO

Great manufacturing isn't just about precision it's about vision, commitment, and the relentless pursuit of excellence.

Who We Are



Team Of passionate professionals

Driven by technology, backed by experience, focused on manufacturing excellence

Backed by advanced technology, skilled craftsmanship, and a commitment to quality, we help businesses bring their ideas to life with confidence and speed. Whether it's prototyping or full-scale production, we're your trusted partner every step of the way.

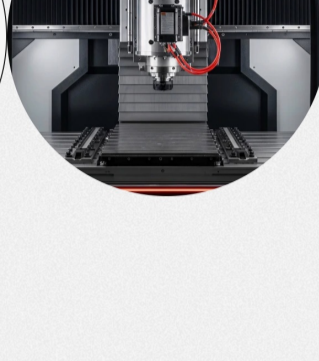
[Learn More About Us](#)

[Download Brochure](#)

// 2005-2K25 //

20+

Delivering consistent manufacturing excellence since day one.



MANUFACTT®

100+

Trusted by businesses across multiple industries

4.9 /5.0 ★★★★★

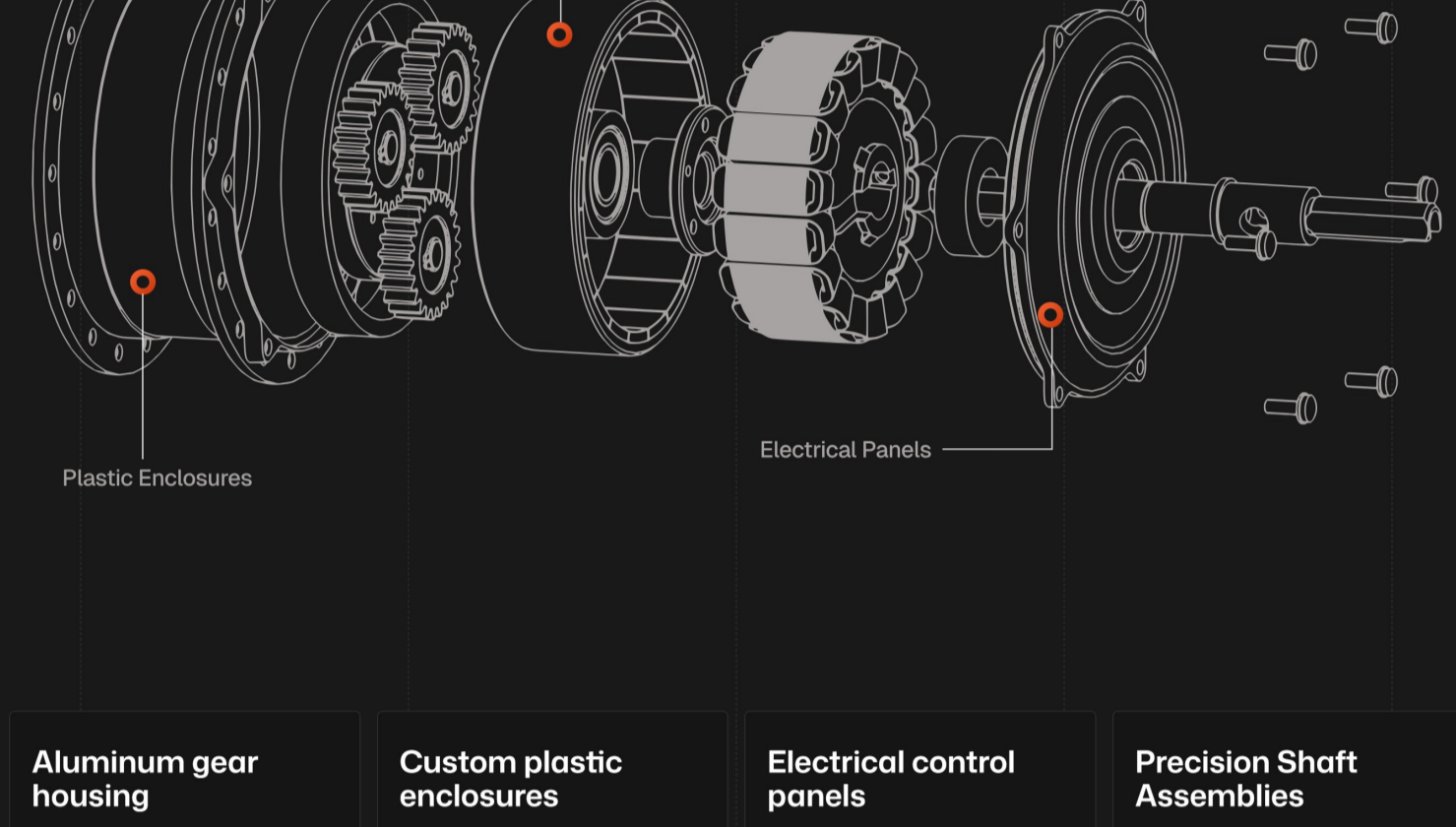
1 million+

Precision-crafted components delivered globally

What We Manufacture

50,000+

Precision-built products delivered to clients across industries and continents.



Aluminum gear housing

Precision CNC machined aluminum housings for gear systems and machinery.

Material: Aluminum 6061 / 7075

Capability: CNC Machining

Size Range: Custom dimensions up to 500mm

Custom plastic enclosures

Injection molded enclosures for electronics and telecom applications.

Material: ABS, Polycarbonate, Nylon

Capability: Injection Molding

Size Range: Varies - custom moldable

Electrical control panels

Weather-resistant control panels for industrial automation systems.

Material: Mild Steel, Stainless Steel

Capability: Sheet Metal Fabrication & Assembly

Size Range: Small to full-scale cabinets

Precision Shaft Assemblies

High-precision steel shafts for automotive and industrial equipment.

Material: Alloy Steel, Stainless Steel

Capability: Turning & Grinding

Size Range: Up to 1200mm

Explore our complete product range across industries.

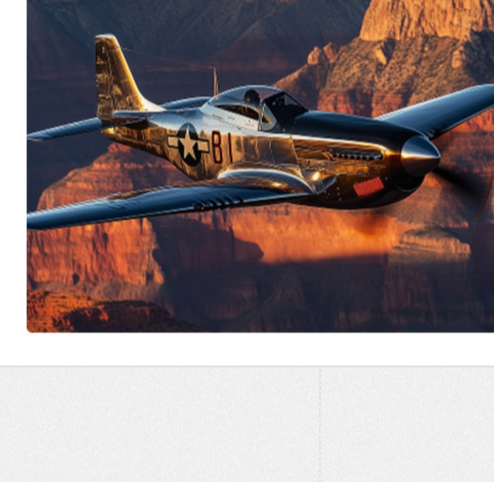
[Download Brochure](#)

[View All Products](#)

Built For Every Industry

Manufacturing solutions for every industry

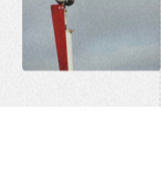
- Aerospace industry
- Automotive
- Medical devices
- Energy & Power
- Industrial equipment



Aerospace

Certified aerospace components built for mission-critical performance and full traceability.

- ✓ Full material traceability
- ✓ NADCAP special process approval
- ✓ Critical safety component expertise



Real-World Success

Real results from real projects

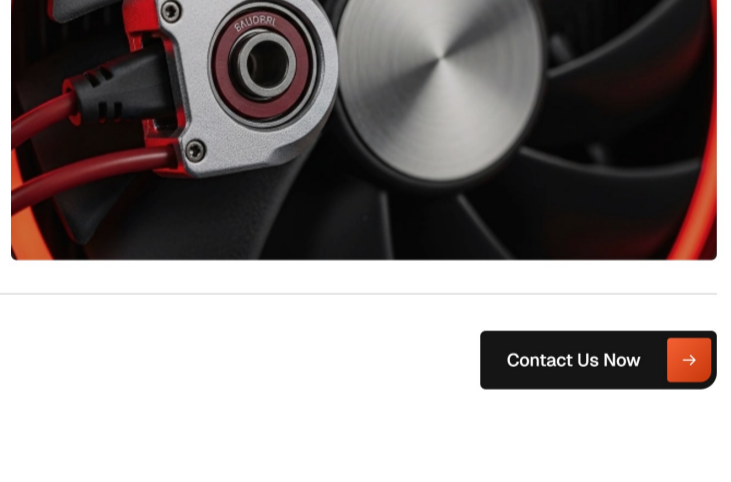
Lightweight castings for Industrial equipment

Redesigned metal castings to reduce material use and maintain strength, optimizing cost and weight.

35%

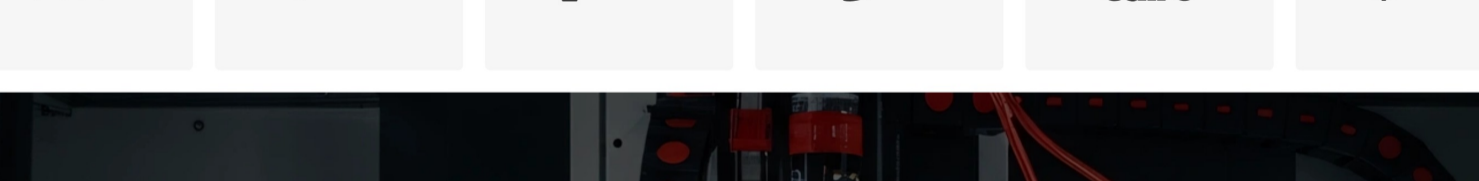
Heavy-duty machinery

[View Detail](#)



Need some help? We're here to provide support and assistance.

[Contact Us Now](#)

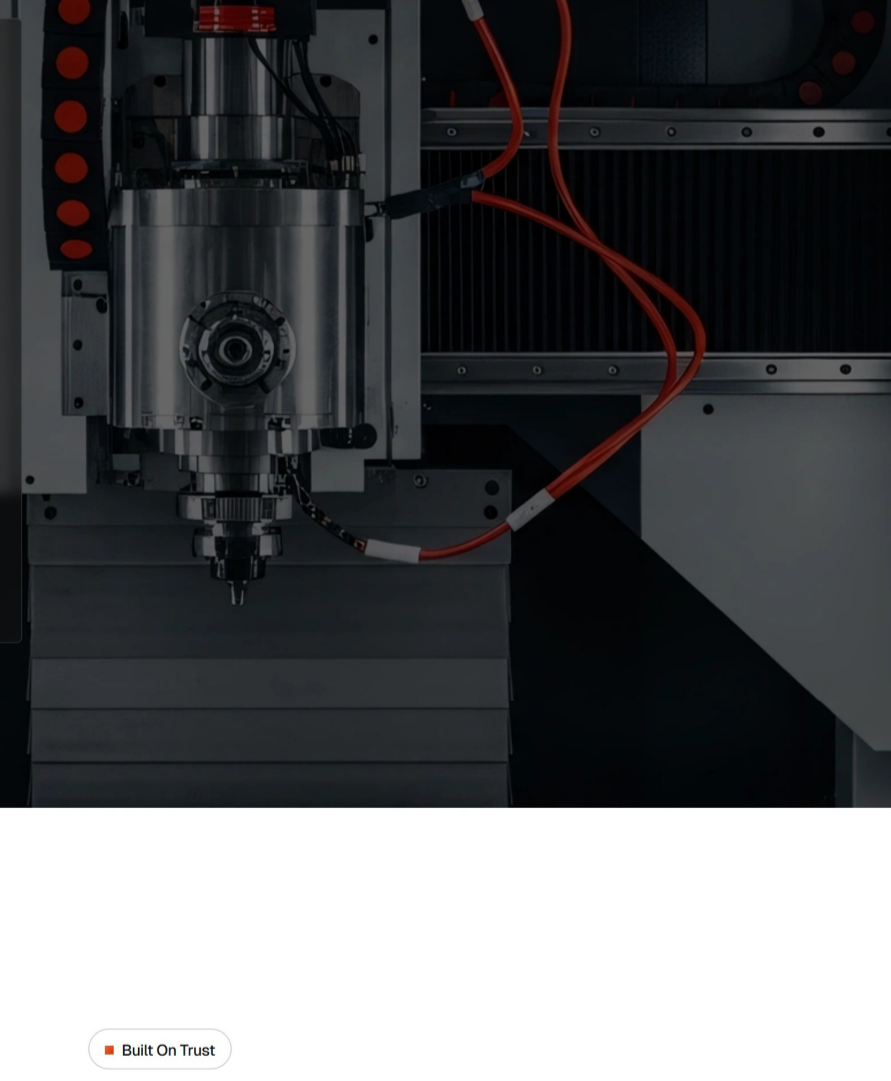


Manufacturing solutions you can count on

- ✓ Decades of experience
- ✓ Certified quality assurance
- ✓ On-time delivery
- ✓ End-to-end solutions
- ✓ Advanced technology
- ✓ Customer-centric approach

[Our Capabilities](#)

★★★★★ Happy clients worldwide



Built On Trust

Trusted by clients, proven by results

★★★★★

The team's dedication and innovative approach transformed our ideas into reality. Every stage of the project was handled with care and expertise.

Emily carter
Product Designer

// 2005-2K25 //

MANUFACTT®

98% On-Time delivery rate

50+ Skilled professionals

Need help choosing the right product?

Always ready with guidance, product details, and after-sales support.

[Contact Support](#)

Insights & Article

Latest from our blog

[View All Blog](#)

Breakthroughs powering efficiency

[Read full blog](#)

How automation is shaping the future of manufacturing

[Read full blog](#)

Stay connected

Join our newsletter for tips, updates, and project highlights—only the good stuff.

Enter your email

Main links

- [Home](#)
- [Home 2](#)
- [About](#)
- [Products](#)
- [Services](#)
- [Case Studies](#)
- [Blog](#)
- [Contact](#)

Utility links

- [Style Guide](#)
- [Instructions](#)
- [Licenses](#)
- [Changelog](#)
- [Error 404](#)
- [Password Protected](#)

Contact info

1238 echo ridge blvd, suite 400, san francisco, CA 94103

+1 (415) 555-0167

example@gmail.com

Working hours

Mon to Fri: 8:00am - 4:00pm

Saturday: 8:00am - 1:00pm

Sunday: Closed